

UPDATED ON JANUARY 5, 2017

# Sew it-Quilt it-Love it!

A Free Project Sheet  
NOT FOR RESALE

By Amy Hamberlin

Kati  
CUPCAKE



Quilt Design by Amy Hamberlin

## Quilt 2

Skill Level: Advanced Beginner

A Free Project Sheet From



Henry Glass & Co., Inc.



facebook

Finished Quilt Size: 40" x 40"  
49 West 37th Street, New York, NY 10018  
tel: 212-686-5194 fax: 212-532-3525  
Toll Free: 800-294-9495  
[www.henryglassfabrics.com](http://www.henryglassfabrics.com)



# SEW IT - QUILT IT - LOVE IT!

Finished Quilt Size: 40" x 40"

Quilt 2

## Fabrics in the Collection



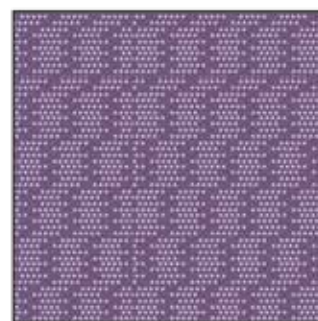
Stripe - Multi  
6668-12



Stripe - Blue  
6668-11



Dots - Green  
6667-66



Dots - Purple  
6667-55



Dots - Pink  
6667-2



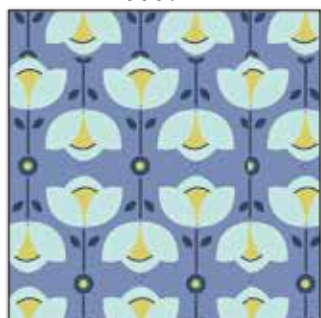
Foulard - Purple  
6666-55



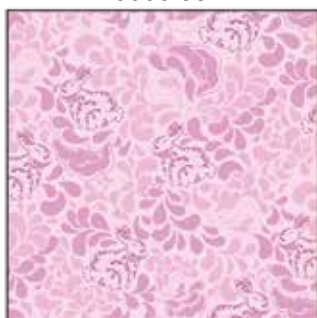
Foulard - Blue  
6666-11



Stylized Flower - Pink  
6665-22



Stylized Flower - Blue  
6665-11



Bunnies - Pink  
6664-22



Bunnies - Blue  
6664-11



Medallion - Purple  
6663-55



Medallion - Blue  
6663-11



Quilt Labels - Multi  
6662-21



Words - Purple  
6661-55



Words - Blue  
6661-11

# SEW IT-QUILT IT-LOVE IT! Quilt 2 Page 1

## Materials

½ yard	Words - Blue (A)	6661-11
⅞ yard	Dots - Pink (B)	6667-2
¼ yard	Medallion - Blue (C)	6663-11
⅓ yard	Bunnies - Pink (D)	6664-22
¼ yard	Stripe - Blue (E)	6668-11
¼ yard	Stylized Flower - Pink (F)	6665-22
¼ yard	Foulard - Blue (G)	6666-11
¼ yard	Words - Purple (H)	6661-55
¼ yard	Dots - Purple (I)	6667-55
¼ yard	Dots - Green (J)	6667-66
¼ yard	Foulard - Purple (K)	6666-55
¼ yard	Medallion - Purple (L)	6663-55
½ yard	Stripe - Multi (M)	6668-12
2 ¾ yards	Quilt Labels - Multi (Backing)	6662-21

\*Includes binding

## Quilt Cutting Instructions

*Please note: all strips are cut across the width of fabric (WOF) from selvage to selvage edge unless otherwise noted.*

### From the Words - Blue (A), cut:

- See instructions to cut (1) sewing machine.

### From the Dots - Pink (B), cut:

- (2) 2 ½" x 26 ½" WOF strips.
- (2) 2 ½" x 30 ½" WOF strips.
- (1) 6 ⅞" x WOF strip. Sub-cut strip into (2) 6 ⅞" squares and (4) 3 ⅞" squares.
- (2) 9 ⅞" square. Cut the squares across one diagonal to make (4) triangles.

### From the Medallion - Blue (C), cut:

- (1) 6 ⅞" x WOF strip. Sub-cut strip into (2) 6 ⅞" squares and (4) 5 ½" squares.

### From the Bunnies - Pink (D), cut:

- (1) 5 ½" x WOF strip. Sub-cut strip into (4) 5 ½" squares.
- (1) 3 ⅞" x WOF strip. Sub-cut strip into (10) 3 ⅞" squares. Cut (6) of the squares across one diagonal to make (12) triangles.

### From the Stripe - Blue (E), cut:

- (1) 3 ½" x WOF strip. Sub-cut strip into (4) 3 ½" squares.

### From the Stylized Flower - Pink (F), cut:

- (1) 5 ½" x WOF strip. Sub-cut strip into (4) 5 ½" squares and (4) 3 ½" squares.

### From the Foulard - Blue (G), cut:

- (1) 5 ½" x WOF strip. Sub-cut strip into (4) 5 ½" squares and (4) 3 ½" squares.

### From the Words - Purple (H), cut:

- (1) 3 ½" x WOF strip. Sub-cut strip into (4) 3 ½" squares.

### From the Dots - Purple (I), cut:

- (2) 1 ½" x 24 ½" WOF strips.
- (2) 1 ½" x 26 ½" WOF strips.

### From the Dots - Green (J), cut:

- (1) 5 ½" x WOF strip. Sub-cut strip into (4) 5 ½" squares.

### From the Foulard - Purple (K), cut:

- (1) 5 ½" x WOF strip. Sub-cut strip into (4) 5 ½" squares.

### From the Medallion - Purple (L), cut:

- (1) 5 ½" x WOF strip. Sub-cut strip into (4) 5 ½" squares.

### From the Stripe - Multi (M), cut:

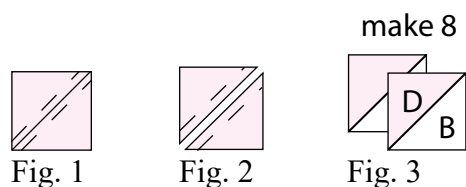
- (5) 2 ½" x WOF strips for the binding.

### From the Quilt Labels - Multi (Backing), cut:

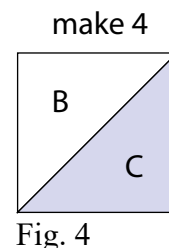
- (2) 48" x WOF strips for the backing. Sew the strips together and trim to make the 48" x 48" back.

## Sewing Instructions

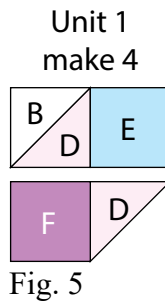
1. Place (1) 3 ⅞" Fabric B square on top of (1) 3 ⅞" Fabric D square, right sides together. Draw a line across the diagonal of the top square (Fig. 1). Sew ¼" away from each side of the drawn diagonal line (Fig. 1). Cut the two squares apart on the drawn diagonal line (Fig. 2) to make (2) DB units (Fig. 3). Trim the DB units to measure 3 ½" square. Repeat to make (8) 3 ½" DB units total.



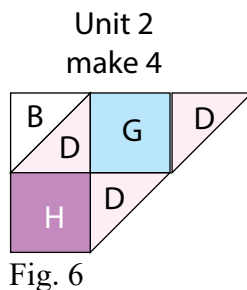
2. Repeat Step 1 using (2) 6 ⅞" Fabric B squares and (2) 6 ⅞" Fabric C squares to make (4) 6 ½" BC units (Fig. 4).



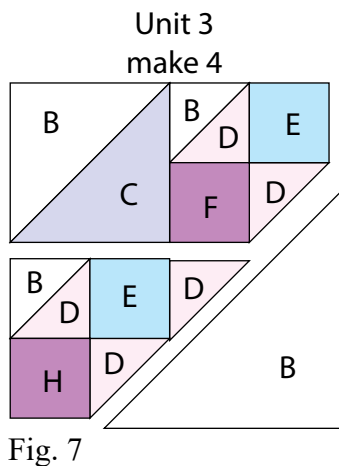
3. Follow Figure 5 and sew (1) DB unit, (1) 3 1/2" Fabric E square, (1) 3 1/2" Fabric F square and (1) Fabric D triangle together to make (1) Unit 1. Repeat to make (4) Unit 1's total.



4. Follow Figure 6 and sew (1) DB unit, (1) 3 1/2" Fabric G square, (1) 3 1/2" Fabric H square and (2) Fabric D triangles together to make (1) Unit 2. Repeat to make (4) Unit 2's total



5. Sew (1) BC unit, (1) Unit 1, (1) Unit 2, and (1) Fabric B triangle together to make (1) Unit 3 (Fig. 7). Repeat to make (4) Unit 3's total.



6. Sew (4) Unit 3's together to make the Center Block. Make sure that the Fabric B large triangles meet in the center (Fig. 8).

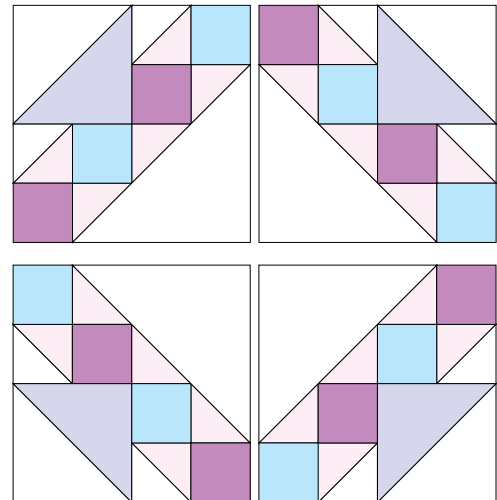


Fig. 8

7. Following the manufacturer's instructions, trace the sewing machine template onto the paper side of the fusible web. Roughly cut the template about 1/8" outside the drawn lines.

8. Press the template onto the wrong side of Fabric A. Cut out the template on the drawn lines.

9. Refer to Figure 9 to arrange and press the Fabric A sewing machine onto the center of the Center Block.

10. Finish the raw edges of each shape with a decorative stitch such as a buttonhole or satin stitch to complete the Center Block.

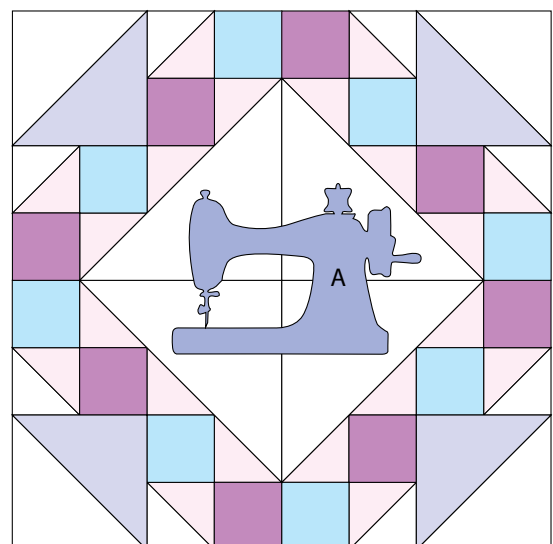


Fig. 9

# SEW IT-QUILT IT-LOVE IT! Quilt 2 Page 3

## Quilt Top Assembly

*(Refer to the Quilt Layout while assembling.)*

11. Sew (1) 1 ½" x 24 ½" Fabric I strip to each side of the Center Block. Sew (1) 1 ½" x 26 ½" Fabric I strip to the top and to the bottom of the Center Block.

12. Sew (1) 2 ½" x 26 ½" Fabric B strip to each side of the Center Block. Sew (1) 2 ½" x 30 ½" Fabric B strip to the top and to the bottom of the Center Block.

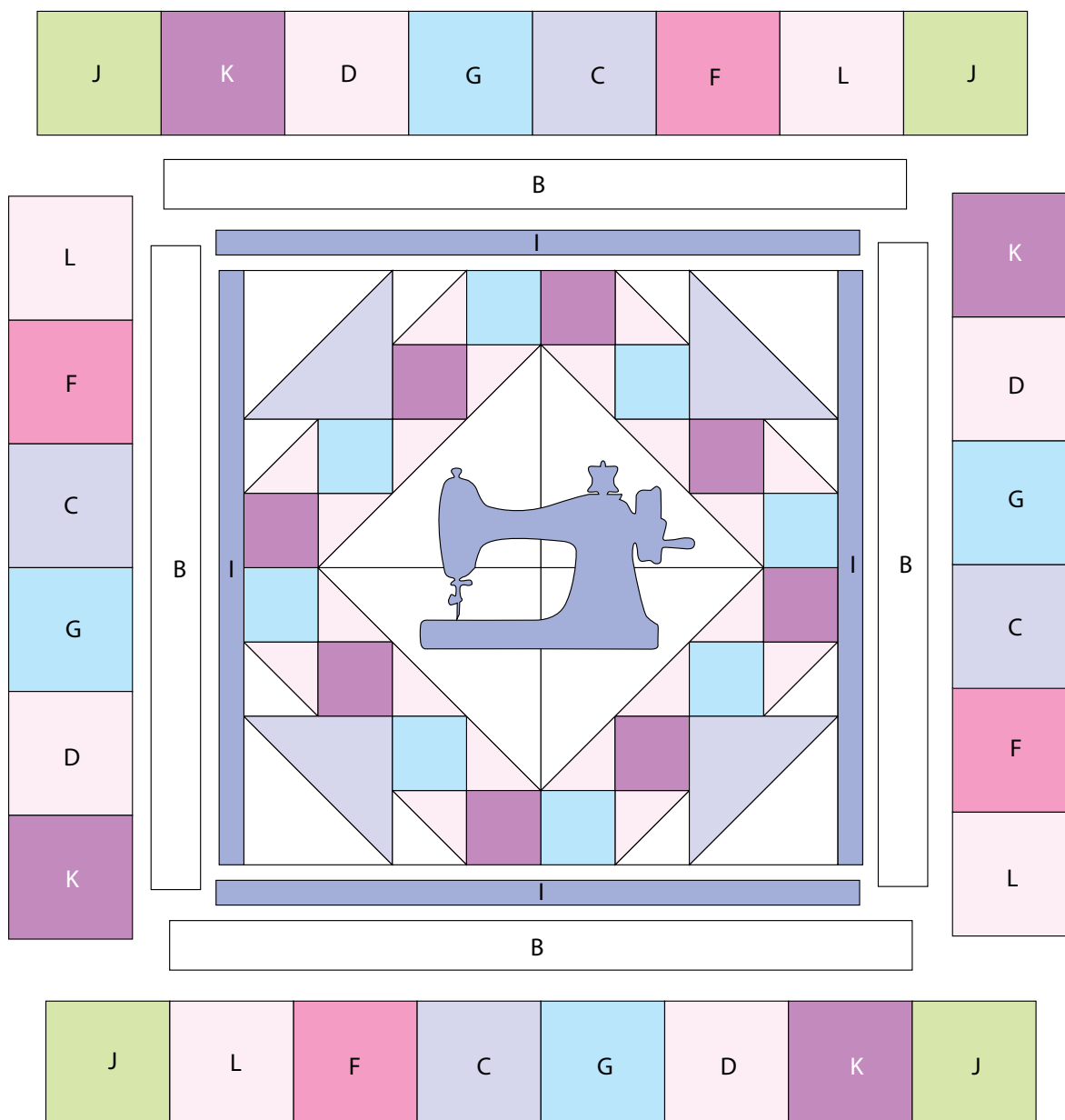
13. Sew (6) assorted 5 ½" squares together to make (1) strip. Repeat to make a second strip. Sew (1) strip to each side of the Center Block.

14. Sew (8) assorted 5 ½" squares together to make (1) strip. Repeat to make a second strip. Sew the strips to the top and to the bottom of the Center Block to make the quilt top.

15. Layer and quilt as desired.

16. Sew the (5) 2 ½" x WOF Fabric M strips together, end to end with 45-degree seams, to make the binding. Fold this long strip in half lengthwise with wrong sides together and press.

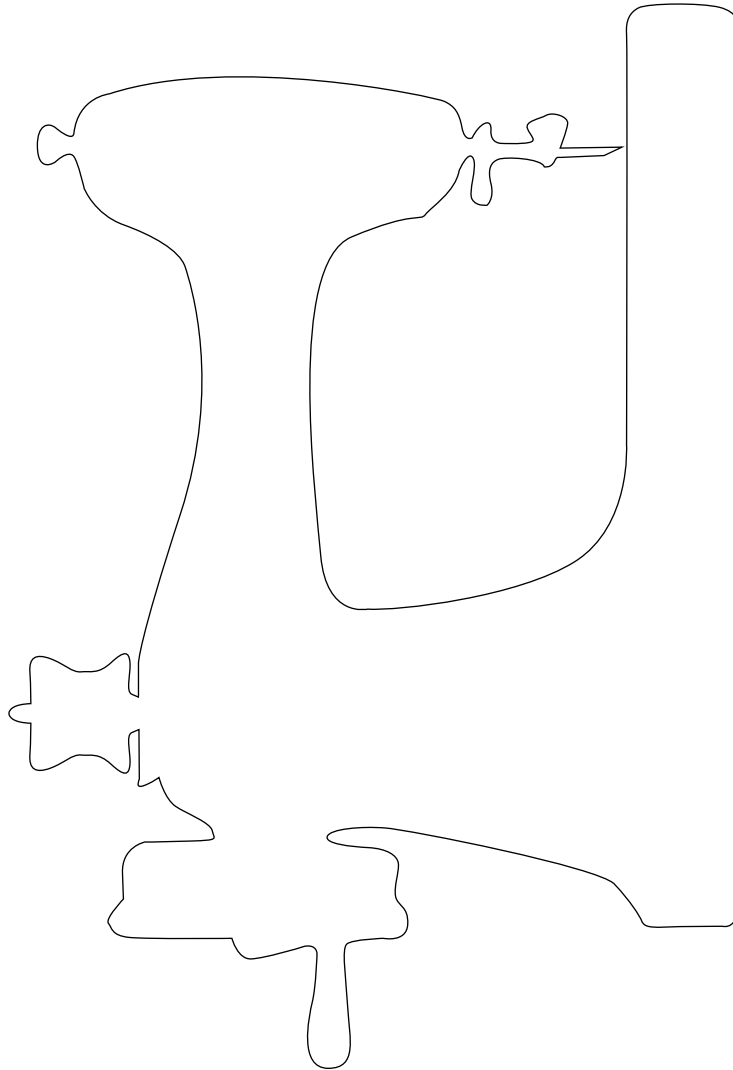
17. Bind as desired.



Quilt Layout



Enlarge Template 200%  
Reversed for Fusible Applique



*Every effort has been made to ensure that all projects are error free. All the information is presented in good faith, however no warranty can be given nor results guaranteed as we have no control over the execution of instructions. Therefore, we assume no responsibility for the use of this information or damages that may occur as a result. When errors are brought to our attention, we make every effort to correct and post a revision as soon as possible. Please make sure to check [www.henryglassfabrics.com](http://www.henryglassfabrics.com) for pattern updates prior to starting the project. We also recommend that you test the project prior to cutting for kits. Finally, all free projects are intended to remain free to you and are **not for resale**.*