



CLOUD9

FABRICS

FREE PROJECT SHEET **FLORET QUILT**

SIZE 55" x 55"



DESIGN & TECHNICAL EDITOR **MELANIE TUAZON**

© CLOUD9 FABRICS 2016 | ALL RIGHTS RESERVED

CLOUD9FABRICS.COM

MATERIALS

FLORET QUILT FEATURING VIGNETTE BY ANEELA HOEY

1¼ yards of each: Buttercup [Turquoise & Pink]

¾ yard of each: Tulip [Turquoise & Pink], Petal [Turquoise & Red]

½ yard Petal [Gold]

¼ yard Floret [Pink]

3½ yards Poppy[Turquoise] for Backing

½ yard Petal [Gold] for Binding

Note: All possible care has been taken to assure the accuracy of this pattern. We are not responsible for printing errors or the manner in which individual work varies. Please read instructions carefully before starting the construction of this quilt. If desired, wash and iron your fabrics before starting to cut.

CUTTING DIRECTIONS

Cutting dimensions include ¼" seam allowances.

1. Use templates to cut convex and concave pieces along dotted lines. Plastic templates can be purchased at jencarltonbailly.bigcartel.com. Convex curve outward and look like a piece of pie, while concave curve inward.

Fabric	Convex Template A	Concave Template B
Floret [Pink]	4	0
Petal [Turquoise]	9	7
Petal [Red]	10	10
Petal [Gold]	7	5
Tulip [Pink]	10	5
Tulip [Turquoise]	11	5
Buttercup [Pink]	10	0
Buttercup [Turquoise]	10	0

From each Buttercup [Pink & Turquoise]:
24- 6" squares

ASSEMBLY DIRECTIONS

BLOCK ASSEMBLY

- Pair up template pieces **A** and **B** according to the chart on page 3.
- Mark centers of curves on each piece and match, letting concave piece ruffle as you match edges outward, pinning or glue basting. Make 52. *[fig 1]*
- Sew slowly using a ¼" seam allowance and press seams toward convex piece. *[fig 2]* Trim blocks to 6", making sure that curved edges are precisely ¼" from block edges.

ASSEMBLING THE QUILT

- Referring to the **QUILT DIAGRAM**, sew ten 6" square blocks in a horizontal row for the first two rows. Follow **QUILT DIAGRAM** for layout of remaining eight rows using 6" square blocks and conve/concave blocks. Make a total of ten rows.
- Sew horizontal rows together to complete quilt top.
- Layer the quilt top, batting, and backing. Baste, quilt as desired, and bind.

Convex <i>Template A</i>	Concave <i>Template B</i>	Number of Sets
Floret [Pink]	Petal [Gold]	2
Floret [Pink]	Petal [Red]	1
Floret [Pink]	Tulip [Pink]	1
Petal [Gold]	Petal [Red]	1
Petal [Gold]	Tulip [Pink]	1
Tulip [Pink]	Petal [Red]	2
Tulip [Pink]	Tulip [Turquoise]	3
Tulip [Turquoise]	Buttercup [Pink]	2
Petal [Turquoise]	Buttercup [Pink]	2
Tulip [Turquoise]	Buttercup [Turquoise]	2
Petal [Turquoise]	Buttercup [Turquoise]	2
Tulip [Pink]	Buttercup [Pink]	2
Petal [Red]	Tulip [Turquoise]	1
Petal [Red]	Petal [Turquoise]	2
Tulip [Turquoise]	Petal [Turquoise]	2
Tulip [Pink]	Petal [Turquoise]	2
Tulip [Turquoise]	Petal [Red]	4
Petal [Red]	Buttercup [Turquoise]	3
Petal [Red]	Buttercup [Pink]	3
Petal [Turquoise]	Petal [Red]	2
Petal [Gold]	Tulip [Turquoise]	2
Tulip [Pink]	Buttercup [Turquoise]	1
Petal [Turquoise]	Tulip [Pink]	1
Petal [Turquoise]	Tulip [Gold]	2
Petal [Gold]	Petal [Turquoise]	1
Petal [Red]	Tulip [Pink]	1
Tulip [Pink]	Petal [Gold]	1
Petal [Gold]	Buttercup [Turquoise]	1
Petal [Gold]	Buttercup [Pink]	1

DIAGRAMS

fig 1

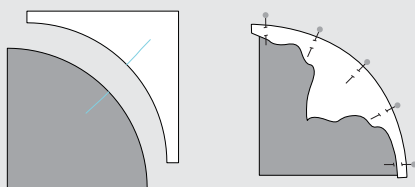
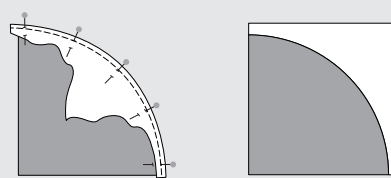






fig 2



QUILT DIAGRAM

-  Tulip [Pink]
-  Tulip [Turquoise]
-  Buttercup [Turquoise]
-  Buttercup [Pink]
-  Floret [Pink]
-  Petal [Red]
-  Petal [Gold]
-  Petal [Turquoise]
-  Limestone

